

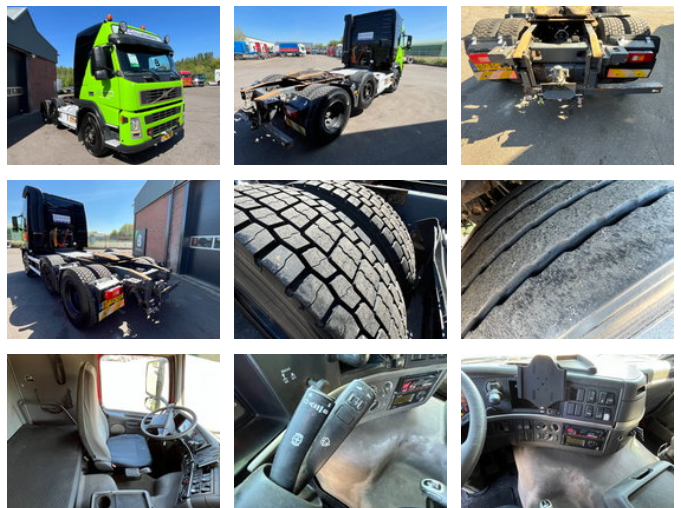
Volvo FM9.380 - ENGINE/CLUTCH 200.000KM - PTO/Kit hydraulic - 40.955

General features

Brand	Volvo
Subcategory	Cab over engine
Licence plate	BP-TG-02
Odometer reading	1.472.323km
Construction year	2004
Date of first registration	22-11-2004
Condition	Used
Fuel	Diesel
Emission class	Euro 3
Reference	40.995



+31 615 376 093 Location Roosendaal, NL    BE THE ONE MOVING FORWARD



Characteristics

Empty weight	8.370kg
Load capacity	18.630kg
GVW	27.000kg
Length	652cm
Width	252cm
Cabin	Sleeper cabin
Cylinder contents	5.480cc

Volvo FM9.380 - ENGINE/CLUTCH 200.000KM - PTO/Kit hydraulic - 40.955

Technical specifications

Number of axes	3
Axis configuration	6x2
Transmission	Automatic
Engine output	279

Description

Volvo FM9.380 - 40.995 Stockno. 40.995 [GENERAL INFO] Brand: Volvo Type: FM9.380 Configuration: 6x2 Category: Tractor unit Year: 2004 Mileage: 1.472.323km Chassisnumber: [ENGINE] Capacity: 5490 cm3 No. of cilinders: 6 Power: 380HP [GEARBOX] Brand: I-Shift Shifting: Automatic No. of gears: [OPTIONS] PTO/Kit Hydraulic NEW ENGINE (Only 200.000KM) Clutch and Compressor (Only 200.000KM) TURBO NEW [MORE INFORMATION?] 0031 615 376 093 sales@btrading.nl

Accessories

- Onboard Computer
- Central doorlocking
- Differential Lock
- Electric windows
- Rotating beacon
- Air conditioning
- Aluminium fuel tank
- Central locking
- Central lubrication
- Cruise control
- Fog lights
- Vehicle heater
- Visor