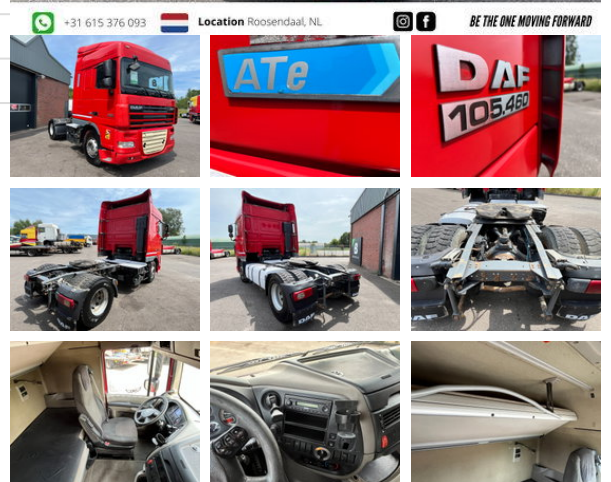


## DAF XF 105.460 - ATe - AC - 2013 - 41.028

### General characteristics

Brand	DAF
Model	XF 105.460
Subcategory	Cab over engine
Meter reading	539.659km
Year of construction	2013
Date of first registration	09-07-2013
Colour	Red
Condition	Used
Fuel	Diesel
Emission class	Euro 5
Reference	41.028



### Properties

Cabin	Sleeping cabin
Cylinder capacity	12.905cc

### Technical specifications

Number of axes	2
Axis configuration	4x2
Transmission	Automatic
Assets	460hp

### Description

DAF XF105.460 - 41.028 Stockno. 41.028 [GENERAL INFO] Brand: DAF Type: XF 105.460 Configuration: 4x2 Category: Tractor unit Year: 2013 Mileage: 539.659km Chassisnumber: [ENGINE] Capacity: 12905 cm3 No. of cylinders: 6 Power: 460HP [GEARBOX] Brand: ZF Shifting: Automatic No. of gears: 12 [OPTIONS] Ate AC MX-Engine brake [MORE INFORMATION?] 0031 615 376 093 sales@btrading.nl

### Accessories

- Onboard Computer
- Central doorlocking
- Electric windows
- Anti-lock braking system
- Air conditioning
- Central locking
- Cruise control
- Fog lights
- Particulate filter
- Vehicle heater